

# CERTIFICATE OF LOCATION OF GOVERNMENT CORNER

EAST QUARTER Corner of Section 15, Township 105 N., Range 42 W., 5 th P.M.

STATE OF MINNESOTA, County of MURRAY

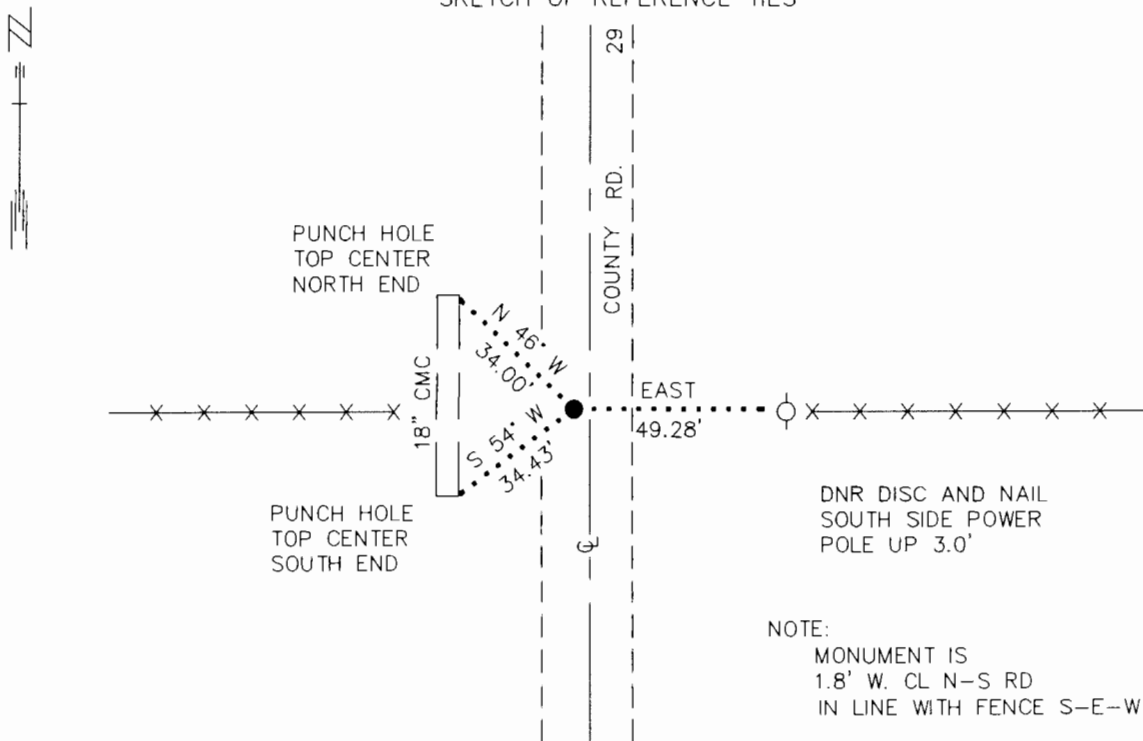
At the corner location shown on the sketch:

On 9/14/92 found a 1/2" IRON ROD, FLUSH  
DATE

left monument as found,  lowered monument,  removed monument (explain)

On \_\_\_\_\_ Placed a \_\_\_\_\_  
DATE

### SKETCH OF REFERENCE TIES



NOTE:  
MONUMENT IS  
1.8' W. CL N-S RD  
IN LINE WITH FENCE S-E-W

1983 MURRAY COUNTY  
COORDINATE SYSTEM

N = 118579.916  
E = 474357.947

BEARINGS OBSERVED WITH COMPASS

Statement of evidence relative to this corner location is on back of page. 10/7/92  
WMA01187.00.00.01

I hereby certify that this document and the data contained herein was prepared by me or under my direct supervision.

Lowell R. Pomeroy SIGNATURE 10-26-92 DATE

Registration No. 17005

- Land Surveyor,  Professional Engineer
- County Surveyor,  County Engineer

OFFICE OF THE COUNTY RECORDER

County of MURRAY

I hereby certify that this document was filed in the Co. recorders office at \_\_\_\_\_ .M. on the \_\_\_\_\_ day of OCT 27 1992 AD., 19\_\_\_\_

County Recorder James V. Johnson  
By \_\_\_\_\_, Deputy

DOCUMENT NO. \_\_\_\_\_

East Quarter Corner Section 15, Township 105 North, Range 42 West

The DNR Bureau of Engineering contacted the following offices for information on this corner:

MN Secretary of State  
Murray County Recorder and Highway Engineer  
Moseng Land Surveying at Marshall  
Madsen Land Surveying at Fairmont

- 1861 The U.S. General Land Office notes, on file in the Secretary of State's Office, show the corner marked with a post, made mound with trench and pits as per instructions.
- 1901 Surveyor's Record Book A, on file in the County Recorder's Office, on page 131, contains a survey by J.W. Woolstencroft. Survey shows the corner as a blue & gray stone 14"x 16"x 22". Stone is shown to measure:  
2650 ft. from the northeast corner Section 15  
2665 ft. from the center of Section 14  
This information is also on file in the County Highway Engineer's Office.
- 1971 April, a large book of corner ties, on file in the County Highway Engineer's Office, describes the corner as a 2 x 2 hub 14" below the surface west of centerline. A 3/4" x 10" rebar was placed over the hub and three reference ties were taken. A note is made that the hub is likely an assumed corner for grading alignment in 1953.  
This information also appears on page 131 of the previously mentioned Surveyor's Record Book A.
- 1992 September 14, the DNR Bureau of Engineering conducted a search for this corner and found a 1/2" iron rod flush in the bituminous surface of County Road #29. Iron rod was found to be:  
1.8 ft. west of centerline County Road #29  
in line with fences east and west  
2652.36 ft. from the northeast corner Section 15  
2588.27 ft. from the northeast corner Section 22  
Did not do any excavating of the corner at this time due to the bituminous surface. Searched for, but did not find the record ties.

Analysis of the available information led the DNR Bureau of Engineering to conclude that the found iron rod marks the location of the corner.